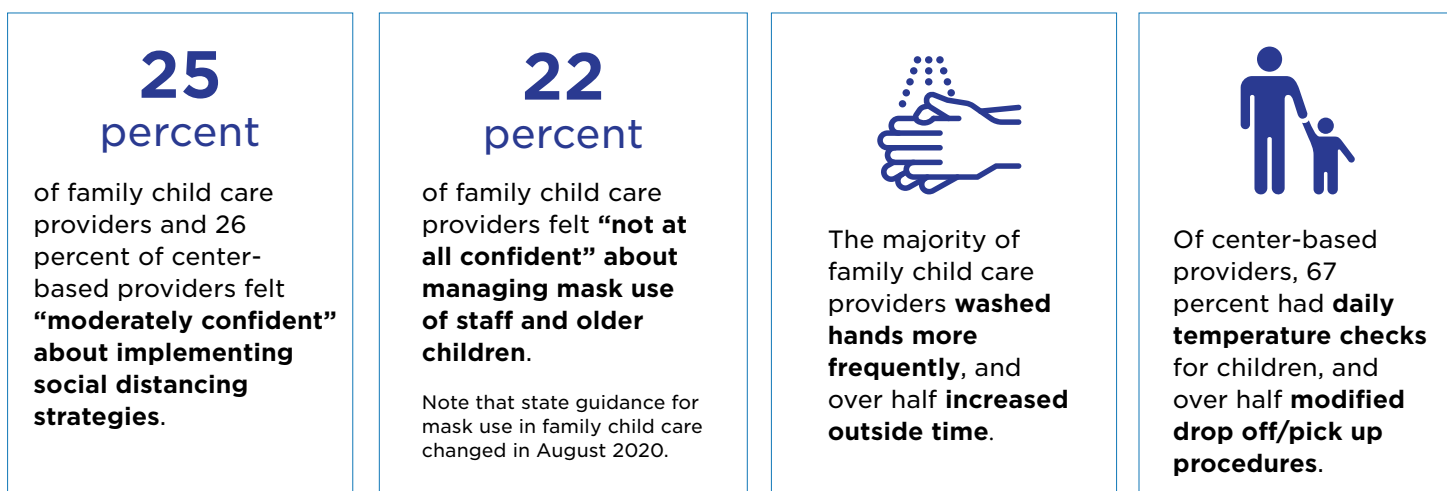


Providers' confidence in practices related to COVID-19

Results from a 2020 study of the Peacetime Emergency Child Care Grant Program

The COVID-19 pandemic has dramatically changed child care services in Minnesota and across the nation. To understand providers' experiences with the pandemic, an online survey was shared with child care providers between July 31, 2020 and September 9, 2020. A total of 1,898 center-based and family child care providers completed the survey. The survey asked child care providers* about their experiences related to a number of COVID-19 challenges. This fact sheet presents initial findings on provider's confidence in practices related to COVID-19.

* The providers invited to participate were applicants (N=5297) to the Peacetime Emergency Child Care Grant Program, and thus, were a subsample of licensed and certified center-based programs and family child care providers throughout Minnesota. These findings are from all providers that applied and responded to the survey, regardless of whether or not they received the grant.



What changes have providers made to comply with new COVID-19 safety guidelines?

