

Using Integrated Data to Increase Equitable Access to Early Childhood Programs

Integrated early childhood data can help state leaders combat inequities in families accessing and participating in early childhood programs that meet the needs of children, families, and communities by answering key questions.

Do children from birth to age 8 have equitable access to care that supports their development and families' needs?

Is there enough supply in all communities?

Is care conveniently located?

Is care affordable?

Is care developmentally appropriate?

Is care culturally inclusive?

Right now, many states don't share or connect data about children's early childhood experiences across multiple agencies.



Departments of Health



Departments of Education

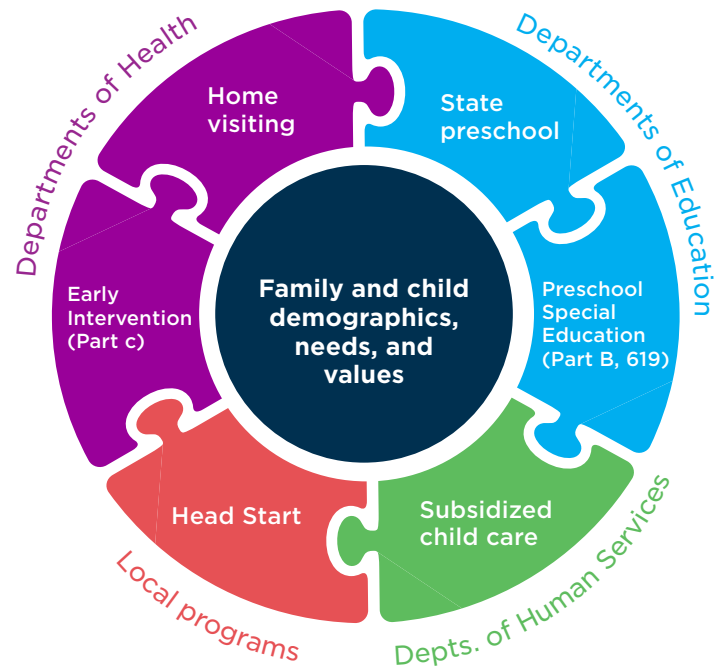


Local programs



Departments of Human Services

Integrated data can help state leaders determine child, staff, and program needs for both real-time and longer-term planning.



To guide data integration, policymakers and stakeholders should prioritize these equity-driven recommendations.



Design policy questions centered on equitable processes and outcomes.



Establish a governance body in partnership with communities to protect privacy and guide data integration, access, and use.



Create an identification system to connect information about children, families, programs, and staff for a more complete picture of participation and access needs.